

TEST CERTIFICATION
ON REQUEST

Productvideo



HOHLWANDDÜBEL-PLUS „K“

Application, dimension of the adhesive plate and positioning as with the HWD12. Only the approved MULTI-MONTI®-plus SSK 16x130mm concrete screw may be used to fasten in the HWD-PLUS. Delivery without screw.

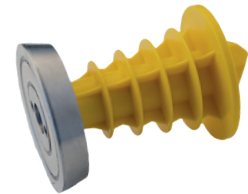
Item-No.	Description	Pcs/Bag	Pcs/Pallet
HWDP16	Double-wall dowel-PLUS „K“ suitable for screw MULTI-MONTI®-plus SSK 16x130mm with adhesive plate	250	10.000



HOHLWANDDÜBEL-PLUS „M“

Same application as HWD12. To fix the push-pull props on the double-wall dowel-PLUS a MULTI-MONTI®-plus SSK 16x130mm must be used. Supplied without screw. Order both items HWDPM and HWDP16 required.

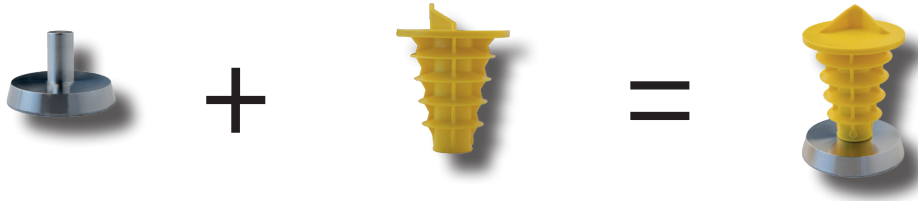
Item-No.	Description	Pcs/Bag	Pcs/Pallet
HWDP16	Double-wall dowel-PLUS „M“ suitable for screw MULTI-MONTI®-plus SSK 16x130mm for magnet	250	12.500
HWDPM	MAGNET for Double-wall dowel-PLUS „M“	1	-



MAGNET for HOHLWANDDÜBEL-PLUS „M“ (Item-No. HWDPM)

HOHLWANDDÜBEL-PLUS „M“ suitable for screw MULTI-MONTI®-plus SSK 16x130mm for magnet (Item-No. HWDP16)

HOHLWANDDÜBEL-PLUS „M“



SCHRAUBE MULTI-MONTI®

Hexagon head with combined washer and cone. Temporary fastenings of site equipment for example props, push-pull props, guardrails or scaffolding.

Item-No.	Description	Pcs/Box	Pcs/Pallet
HWDPBS	Screw MULTI-MONTI®-plus SSK 16x130mm for HOHLWANDDÜBEL-PLUS	10	3.360
HWDPBSPH	PRÜFHÜLSE 47794 for screw MULTI-MONTI®-plus SSK 16x130mm	1	-

MULTI-MONTI®-plus SSK 16x130mm



Prüfhülse 47794



HOHLWANDDÜBEL-PLUS MONTAGESSET

Standard Mounting-Set consisting of:

- 30 pcs. MULTI-MONTI®-plus SSK 16x130mm
- each 60 pcs. Leveling shims UP02, UP03, UP05, UP10, UP20

Special charging possible.

Item-No.	Description	Pcs/VE	Pcs/Pallet
HWDPSET	Mounting-Set for HOHLWANDDÜBEL-PLUS	1	40

