

EXZENTER-PLUS

For quick and user-friendly positioning of formwork on concrete foundations or for distance fixing of reinforcement mats. Easy positioning on rough surfaces. Can be used with almost all common bolt pusher/pin setting tools and magazined nails.

Excenter hollow



Item-No.	Ø mm	Heigth mm	Pcs/ Bag	Pcs/ Big bag	Pcs/ Palett
EHP	48	30	100	500	12.000

Excenter hollow with nail



Item-No.	Ø mm	Heigth mm	Length mm	Pcs/ Box	Pcs/ Palett
EHPN57	48	30	57	100	8.400

Excenter flat headed nail

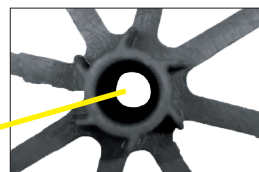


Item-No.	Pole Ø in mm	Length mm	Pcs/ Box
EHNN57	3,7	57	100

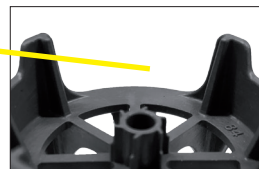
NEW

Advantages:

- Can be used with almost all common bolt pusher/pin setting tools and magazined nails
- Reduced visibility after removal of formwork
- Large cut-outs ensure optimum connection with in-situ concrete



Due to the shape of the receiver it can be used with all common devices.



Optimized for magazine bolt pusher/pin setting tools. Suitable for single nails and magazined nails.

Nevoga GmbH

Znaimer Str. 4
DE 83395 Freilassing
Phone: +49 8654 4731-0
Fax: +49 8654 4731-18
E-Mail: info@nevoga.com
www.nevoga.com

